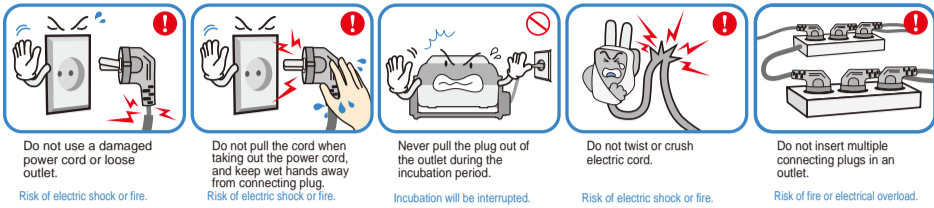


1. Safety Precautions

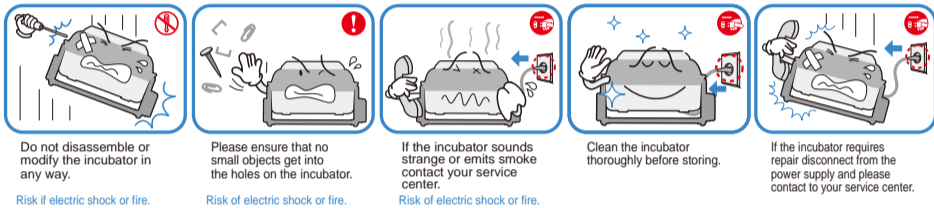
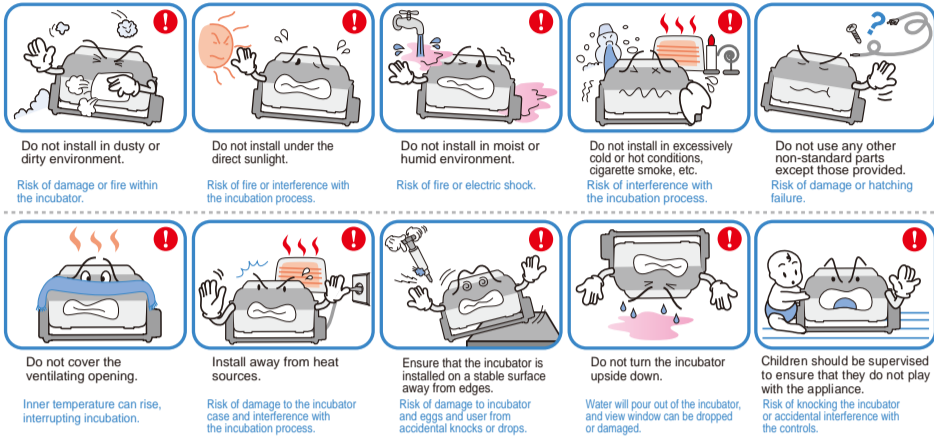
Electrical hazards

CAUTION Be careful the details below when you use.



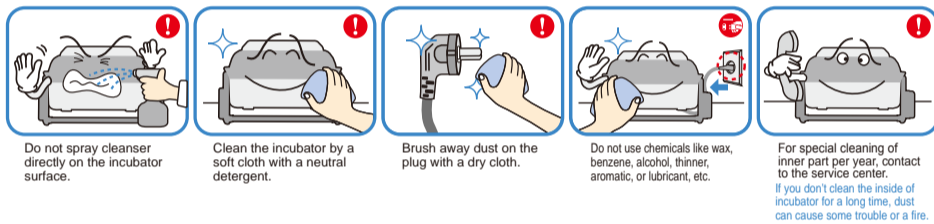
Setting Cautions

CAUTION Be careful the details below when you use.



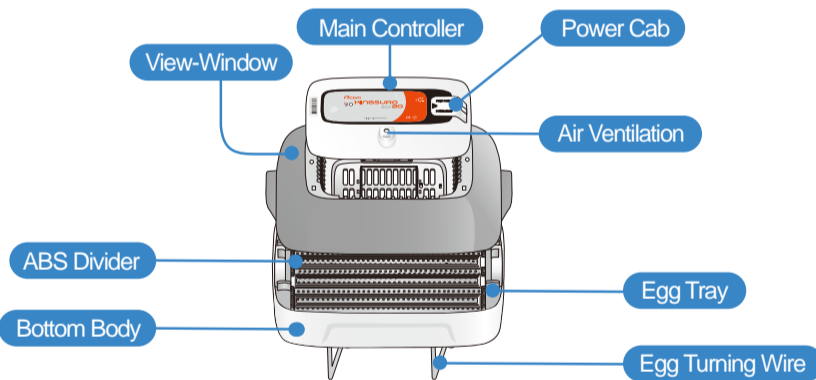
Cleaning Cautions

CAUTION Be sure to disconnect the electric cord from the outlet before cleaning.



* This appliance is not intended for use by persons (including children) with reduced physical, sensory or mental capabilities, or lack of experience and knowledge, unless they have been given supervision or instruction concerning use of the appliance by a person responsible for their safety.

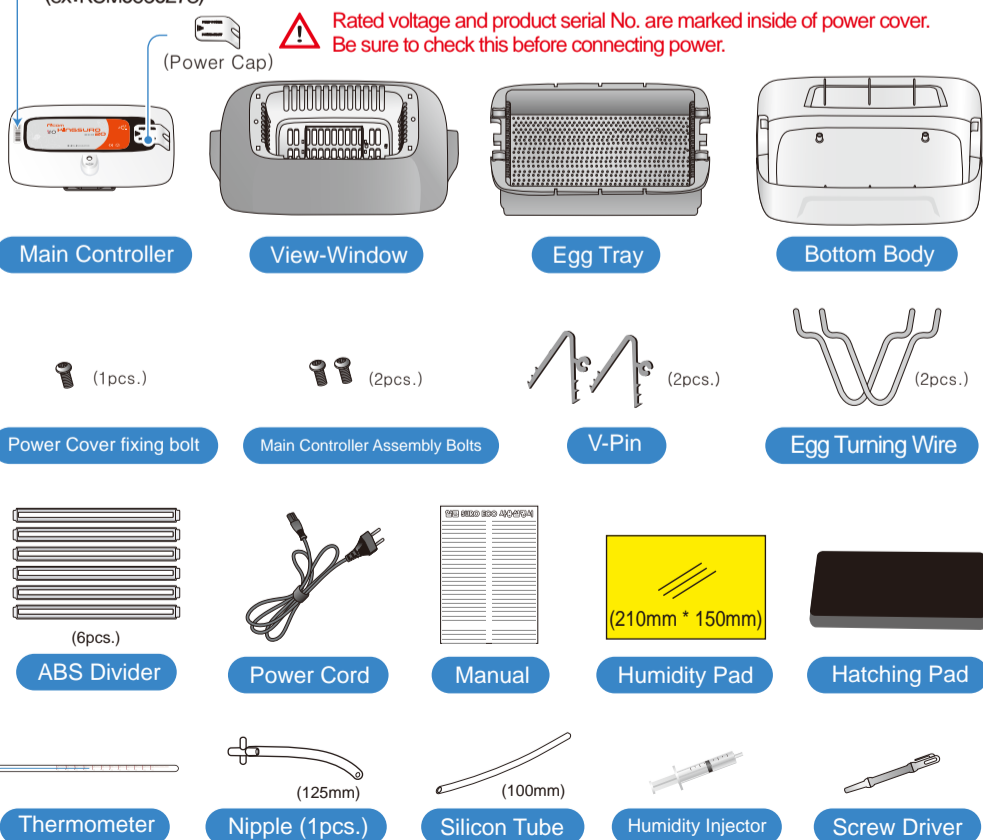
2. Identification of Parts



3. Basic components

Your Serial no., located on left-side of the main controller. Please be sure not to get dirty or break. (ex:RCM0950278)

CAUTION Rated voltage and product serial No. are marked inside of power cover. Be sure to check this before connecting power.



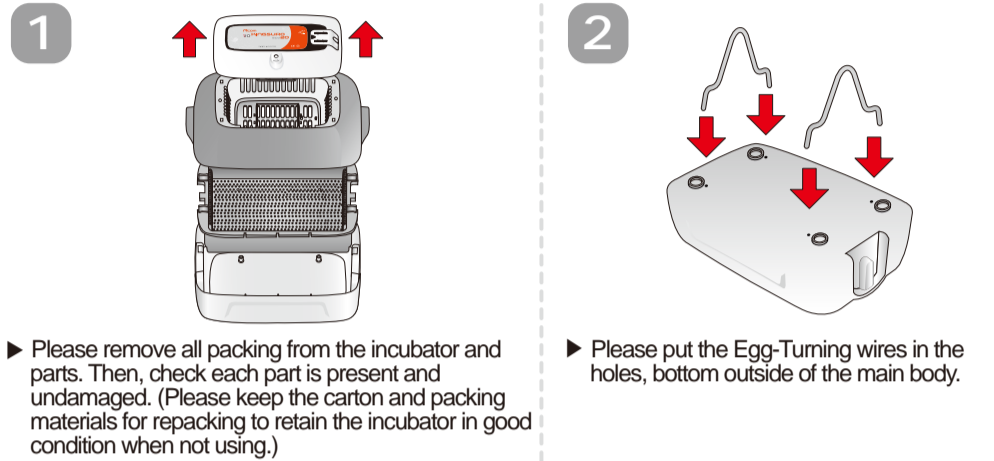
4. Display



Name & Function of operation Parts

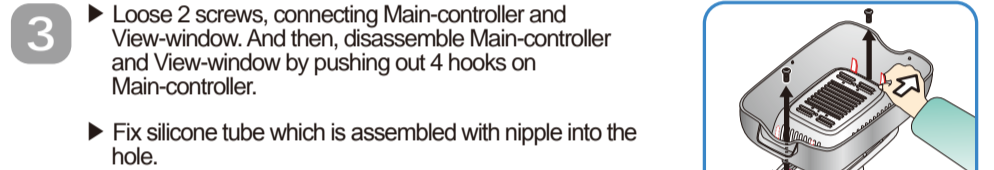
- ① Heater Operation Lamp
- Light on when working
- ② Temperature Control Regulator
- Using screw driver and turn to "+" to make Temp. Up, and "-" to make Temp. Down.

5. How to Assemble (Before Using)



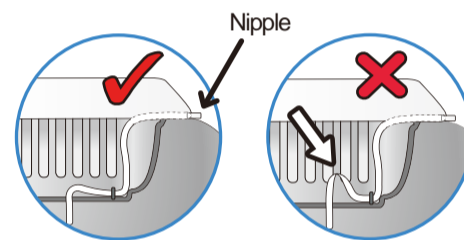
▶ Please remove all packing from the incubator and parts. Then, check each part is present and undamaged. (Please keep the carton and packing materials for repacking to retain the incubator in good condition when not using.)

▶ Please put the Egg-Turning wires in the holes, bottom outside of the main body.

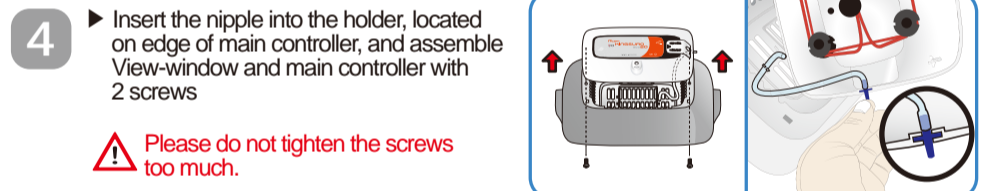


▶ Loose 2 screws, connecting Main-controller and View-window. And then, disassemble Main-controller and View-window by pushing out 4 hooks on Main-controller.

▶ Fix silicone tube which is assembled with nipple into the hole.

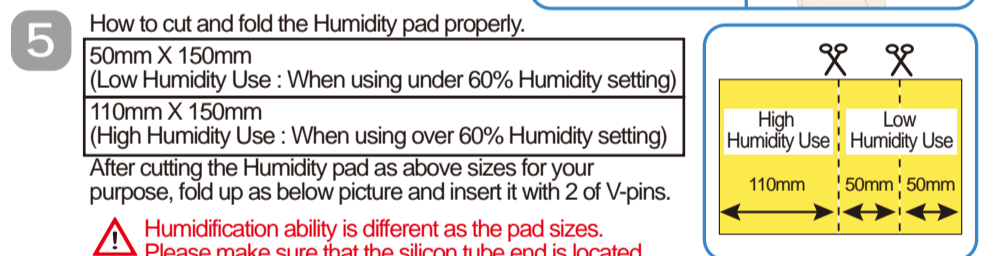


CAUTION Be careful to ensure the silicon tube is not folded.



▶ Insert the nipple into the holder, located on edge of main controller, and assemble View-window and main controller with 2 screws

CAUTION Please do not tighten the screws too much.



▶ How to cut and fold the Humidity pad properly.

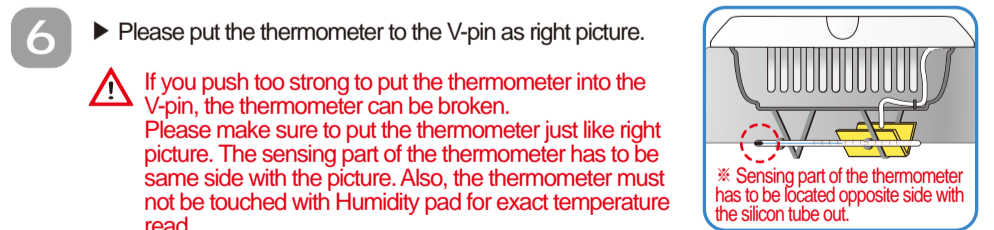
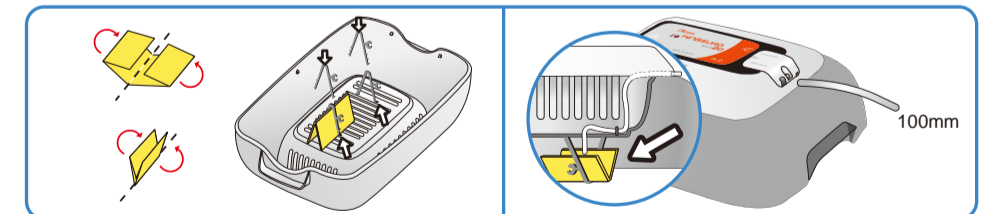
50mm X 150mm (Low Humidity Use : When using under 60% Humidity setting)
110mm X 150mm (High Humidity Use : When using over 60% Humidity setting)
After cutting the Humidity pad as above sizes for your purpose, fold up as below picture and insert it with 2 of V-pins.

CAUTION Humidification ability is different as the pad sizes. Please make sure that the silicon tube end is located onto the Humidity pad.

▶ Please change the '50mm X 150mm sized humidity pad' to '110mm X 150mm sized pad' about 3 days before bird hatching to give much more humid environment inside of the incubator.

* The 'use by' of Humidity pad is about 4-6 months, but if you use dirty water, the life of pad will be short. (Using Distilled-water strongly recommended) Humidity pad can be purchased separately again from our shop.

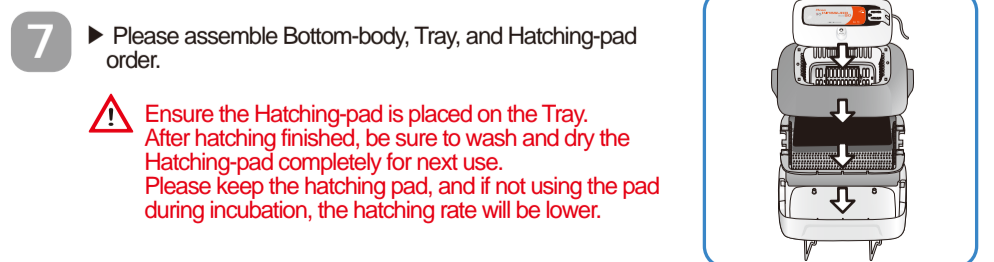
▶ Please put about 100mm long silicon tube to the other end of the silicon tube nipple, made of plastic, located outside of the incubator as below picture.



▶ Please put the thermometer to the V-pin as right picture.

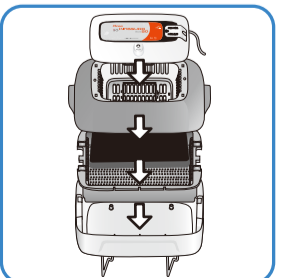
CAUTION If you push too strong to put the thermometer into the V-pin, the thermometer can be broken. Please make sure to put the thermometer just like right picture. The sensing part of the thermometer has to be same side with the picture. Also, the thermometer must not be touched with Humidity pad for exact temperature read.

* Sensing part of the thermometer has to be located opposite side with the silicon tube out.



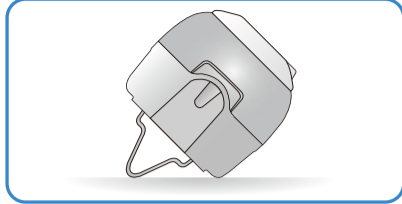
▶ Please assemble Bottom-body, Tray, and Hatching-pad order.

CAUTION Ensure the Hatching-pad is placed on the Tray. After hatching finished, be sure to wash and dry the Hatching-pad completely for next use. Please keep the hatching pad, and if not using the pad during incubation, the hatching rate will be lower.



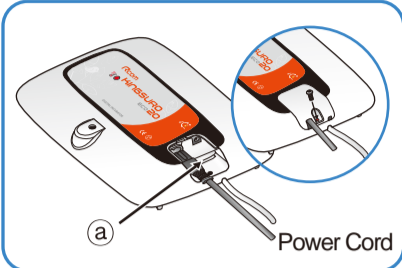
6. How to install incubator

- ▶ Place assembled incubator on horizontal.
- ▶ Open the power cap to insert the power code, and then put reassemble.



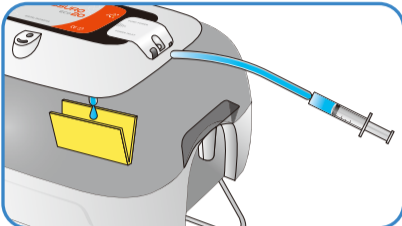
! Be careful and ensure the cord not to get jammed when you tighten screw bolt.

- ▶ Ensure rated voltage of the incubator ①. If you open power cap, there is sticker which tells rated voltage in the position picture. ②



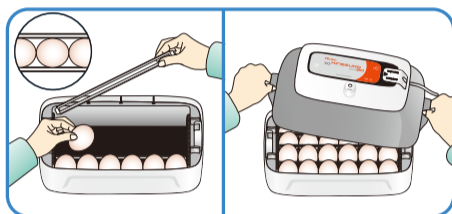
- ▶ Check the temperature inside of the incubator before putting eggs. When setting temperature, use the provided screwdriver. [Ref. 10]

- ▶ Slowly inject water with provided syringe, and be careful not to drop on the eggs.



! If you put too much pressure on syringe or not to inject slowly, water can be dropped on the eggs.

- ▶ Place eggs by adjusting tray divider according to egg size and cover view window.



! Control the space of eggs and divider optimally, so the eggs are not interrupted for incubation.

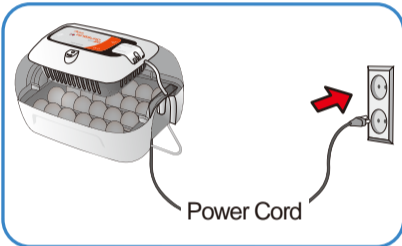
Tip It is recommended to place eggs with sharp end side down.



Tip When the first operated, there could be odor for temporarily, but this is not incubator problem.

Tip Set the eggs in the incubator, and then operate 1~2 hours to get internal temperature stable. please calibrate temperature once. We usually recommend higher temperature for incubation. [37.5 ± 0.5 °C]

! If the view window is not closed completely, internal temperature will not go up.

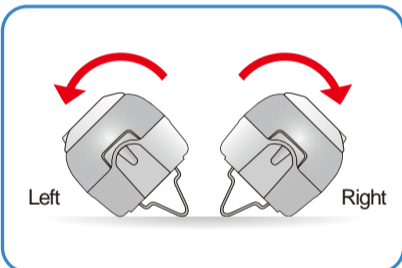


7. Egg turning

- ▶ Depends on eggs of birds, egg turning cycles are various. We recommend 1 hour, and maximum of egg turning time is 3 hours, turn right or left. During the first week, interval of the egg turning cycle is 1 hour, and stop the egg turning before hatch.

Tip For automatic egg turning, you can buy optional item, KING SURO Eggvan.

- ▶ Before 3 days of hatching, remove egg turning wires, and place incubator on horizontal to stop egg turning.



! While egg turning, be careful and ensure the view window is not opened nor pour eggs.

8. Incubation Termination

※ There is no specified ON or OFF button on the incubator.

- ▶ Just take off the power cord after hatching.

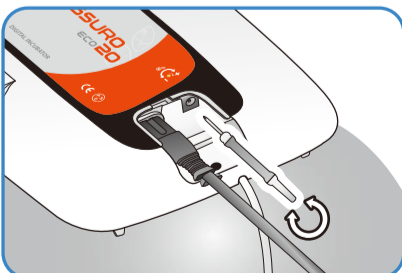
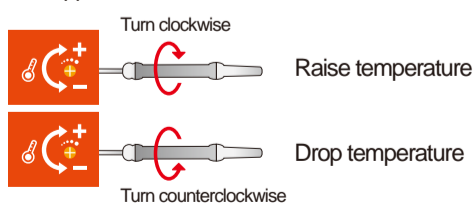
9. Water supply for humidity.

- ▶ During hatching, supply water to humidity pad at least once a day.
- ▶ Use provided syringe, inject 15ml water through silicone tube.

Suitable installation environment	Temperature and humidity at the installation site are low [Below 20°C(68°F), 40%]	Temperature and humidity at the installation site are high [Over 25°C(77°F), 60%]	Before 3 days of hatching
1 time per every 5~6 hours	Whenever day	1 ~ 2 times a day	At the end of incubation, exchange to high humidity pad and inject 20~25ml
Humidity pad (50mm x 150mm)			Humidity pad (110mm x 150mm)

10. How to set temperature.

- ▶ If you want to adjust the desired temperature, open the power cap and turn temperature control volume using the supplied driver.



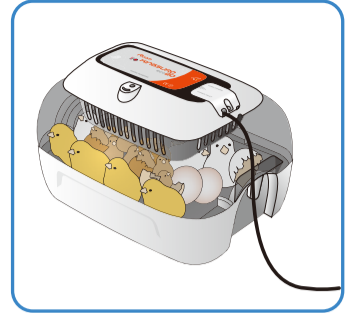
! Temperature regulator can be damaged if you use unspecified tool, and repair service will be paid.

! Temperature control is very sensitive. therefore, turn it little by little. (After setting, read temperature about 10~20 minutes later.)

! In the first time when putting the eggs, adjust temperature after 1~3hours for stabilization. Please do not turn high from the first time, raise temperature from low to high little by little carefully.

11. Maintenance after Hatching

- ▶ Newly-born birds, just after hatching are very weak for clod. Therefore, a brooder should be ready for them. In case a brooder is not prepared, please let them stay in the incubator for 1~2 days after hatching. If you have a brooder, the temperature must be around 35~37°C (95~98.5°F). If you visit our web-site (www.Rcom.co.kr), you can see how to make D.I.Y. brooder.



- ▶ There are differences in bird feeding due to their various species, so please find out proper feeding before hatching. (we have many information for bird breeding on our web-site.)

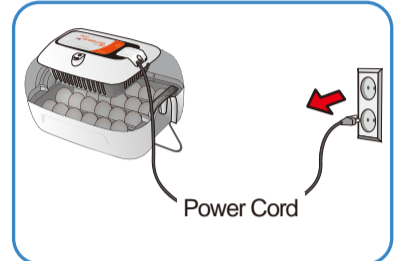
! We recommend you to use under 20W lamp to warm up in the D.I.Y brooder. If using over 20W lamps, temperature would warm up too much to kill your bird or there would be high possibility of fire. If baby bird fall into water and get wet, please dry them immediately to avoid hypothermia.

※ Brooding lamp spec according to the brooding room size.
Lamp Spec : up to 20W, Brooding Room size : 370mm X 270mm X 130mm

12. How to clean up after hatching finished

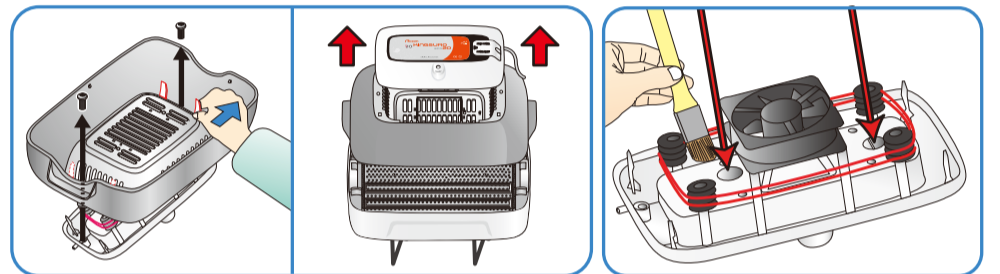
! Be sure to pull out the power cord before clean up incubator.

Tip After incubation terminated, never leave the incubator covered with the View-window because all the moisture inside of the incubator can break electric parts, especially PC board, and make your next hatching be failed. Please be sure to remove the View-window and dry the incubator perfectly.

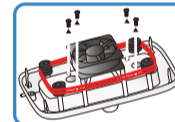


- ▶ Remove Main-controller from View-window.

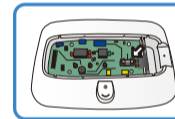
- ▶ Take off all the dust and feathers using brush carefully. Please do not brush too hard. The sensor, heater or fan can be broken.



13. How to replace the Fuse

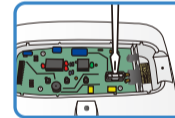


- ▶ If you have power failure even though you plug in power cord, please check the Fuse. If you disassemble the PC board after loosening 4 screws as left picture, there is a Fuse, and if the Fuse is damaged, please remove and replace it.



- ▶ Please make sure the Fuse standard. (250V 2A Ø5*20mm)

- ▶ After replacing the Fuse, please assemble in reverse order of disassemble.



! If the cover is not perfectly assembled, the rubber seals are not perfectly block the moisture from incubation room, and this can make the PC board broken.

Tip You can purchase the fuse separately at the shop, you purchased.

14. Specification

power input	AC 100~120[V], 50/60[Hz] / AC 220~240[V], 50/60[Hz]		
power consumption	Max : 48[W]	Average : 25[W]	
Operating serviceable temp.	20 ~ 42[°C] (68~107.6[°F])		
Size	(W)370x(D)231x(H)209 [mm]		
Weight	2.4[kg]		
Fuse Standard	250[V] 2[A] (Ø5x20[mm])		
Incubation Capacity	Chick : 24[eggs]	Duck : 20[eggs]	Duck : 9 ~ 12[eggs]
	Pheasant : 40[eggs]	Quail : 60[eggs]	Amazone / Macaw : 36[eggs]

! Hatching results can be changed by a large number of factors. Autoelex Co.,Ltd. & our distributors will not take a responsibility for loss of eggs or animals under any circumstances such as hatching failure, user's carelessness, power failure, or malfunction. Also, please be sure that the incubator works without any problem before placing eggs in the incubator.

※ Register your product Serial No. on our website for free 2 years guarantee.

※ Refer to website for how to register. (Free 1 years guarantee in case not registered.)

- ▶ If you are a new member of Rcom, you need to log in our website at www.Rcom.co.kr
 1. Click English
 2. Click "CUSTOMER" on the top of right corner
 3. Click "REGISTER PRODUCT"
 4. Fill in your information on the blanks
 5. Completed to register

- ▶ If you already registered your information on Rcom website
 1. Log on www.Rcom.co.kr
 2. Click "Sign up on the top right corner"
 3. Check "YES" to the question "Did you purchase Rcom products?"
 4. Fill in your information on the blanks

Visit our web site (www.r-com.co.kr) for more information on our products and other informations. Update of information : download the necessary information from resource room in Rcom homepage. Rcom digital incubator is designed for easy and convenient use. For the improvement of the functions of the incubator, design, how to use, etc. can be changed without notice in advance.

AUTOELEX CO.,LTD.

- Head Office : Deokam 612 Juchon Gimhae 621-843 KOREA
- TEL : 82-55-337-2560 (Direct to sales team)
82-55-337-2561-3 (Office)
- FAX : 82-55-337-2568
- E-MAIL : Rcom@Rcom.co.kr