

Love of life begins with "Rcom"

# REPTILE 230

Ver. 1

## DIGITAL REPTILE INCUBATOR USER'S MANUAL

### REPTILE PRO 230



**Rcom**



## How to use Rcom Reptile PRO 230

<b>1. Introduction</b>	
(1) Rcom Reptile 230 Introduction	3 ~ 7
(2) Safety precautions	
(3) Identification of Parts and Composition	
(4) Name & Function of Operation Parts	
(5) SET UP(Other Functions) / Easy Function Operation	
<b>2. Before use</b>	
(1) What is an Incubation Room?	8
(2) How to Assemble	
<b>3. Incubation</b>	
(1) Incubation Installation / Incubation Start	9 ~ 10
<b>4. Function Settings</b>	
(1) Incubation Modes / Incubation start with Automatic Mode	11 ~ 17
(2) Incubation start with Manual Mode	
(3) Incubation start for Other Reptiles	
(4) Incubation Termination / Change Cels.& Fahr. / Return to Factory Setting	
(5) Incubation conditions reset / How to Set Turn ON, OFF Humidification Function	
(6) Abnormal High or Low temperatue Alarm Function	
<b>5. Other Functions</b>	
(1) Alarm for water supplement / Abnormal High or Low temperatue Alarm / Power Failure Alarm Function	17
<b>6. How to Clean</b>	
(1) Disassembling and Cleaning the Incubator	18 ~ 19
<b>7. Understanding</b>	
(1) Recommended temperature and humidity table by reptile during incubation	20
<b>8. Product Information</b>	
(1) Troubleshooting	21 ~ 23
(2) Specification	

Introduction

Before use

Incubation

Function Settings

Other Functions

How to Clean

Understanding

Product Information



The result of Hatching and Brooding can be changed by a large numbers of factors. Autoelex Co., Ltd. & our distributors will not take any responsibility for 'Loss of eggs or pet/animal lives' under any circumstances such as 'Hatching/Brooding failures', 'User's carelessness', 'Personal (un-certificated) conversion / alteration', 'Arbitrary using out of the machine's purpose', 'Electric power failure', or 'Malfunctioning'. Please be sure that the machine works without any problem before placing Eggs or Pets(Animals). Also, we strongly recommend you to read the User's Manual carefully to minimize of any failure.

### Mark Explanation



**Caution :** Caution mark against a fault that can cause damage, trouble, or failure of incubation.



Prohibited.



It is necessary to keep.



Do not disassemble.



Remove the power cord from outlet.



Do not touch.



Ground Connection for preventing electric shock.



**Tip :** References or useful suggestions in using Rcom product



**CAUTION** Warning of actions which may be dangerous or cause damage to the incubator.


### Rcom Reptile 230

First of all, we would like to express our deep appreciation for all the customers who purchased Rcom Reptile Incubator. Rcom Reptile Incubator was designed to be used easily and conveniently by the newest digital control method for controlling optimal incubation environment automatically, however, in order to get the best incubation result, at first, it is very important for users to have some incubation knowledge and right machine operation method. Therefore, before using incubator, be sure to read instruction manual. Rcom Reptile Incubator provides the best incubation environment, however, it is necessary for users to observe and adjust each environment necessary for incubation including egg kind, temperature and humidity management by incubation date, surrounding conditions of incubator, and this product was made it possible to make the best setting for all the environments necessary for incubation.

### Features of Rcom Reptile 230

#### [Main Function]

- \* LCD display with incubation information, and animation graphic design
- \* Micro chip with optimum incubation conditions according to the species of reptiles, for incubation beginners
- \* Built-in outside temperature environment sensor adjusting heater volume automatically according to the outside environment of incubator
- \* Variable Air Vent that can make air control be convenient
- \* Superior design with convenient operation
- \* Optimum air circulation technique with 5 high reliability BLDC fans
- \* Automatic Temp. & Humidity setting and control
- \* Body locking device
- \* Water supplement alarm function
- \* Antiblastic Humidification method by heating water, which discourages bacterial growth
- \* Double-glazed view window for minimizing the influence of outside temperature
- \* Enhanced reliability by applying Swiss's Sensirion's 3rd generation temperature & humidity sensor
- \* Powerful SMPS application for stable power supply
- \* The function of diurnal range (D.T.G)

 **Tip** Daily temperature range function means as follows : It is a function artificially making the highest time zone of temperature by sun at the natural condition, and it is a function that can raise the incubation success rate of reptile by the optimal incubation environment by raising temperature at the fixed time zone.

#### [Safety Function]

- \* Self-examination function for sensing abnormal conditions
- \* Alarm and display function of abnormal incubator temperature caused by sudden fluctuation of ambient temperature
- \* Incubation data memory function and power outage notification function in case of power failure
- \* Circulation fan cover for safety and electric safety cut-out switch on the upper main body for safety
- \* Heater supporter designed for heater tension control and its safety
- \* Safety cover applied for protecting humidification unit
- \* Humidification unit durability improved by water proof BLDC fan
- \* Alarm function when water needs replenishing

#### [Easy Function]

- \* No need of separate humidification unit as it included in main body
- \* Centigrade and Fahrenheit changing function
- \* Easy attachment and detachment of double-glazed viewing window
- \* Tray for incubation for exclusive use by reptile
- \* Bottom body designed for easy cleaning
- \* Micro chip with optimum incubation conditions according to the species of reptiles, for incubation beginners

## Electrical hazards

**CAUTION** Be careful the details below when you use.

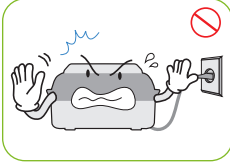
Do not use a damaged power cord or loose outlet.

► Risk of electric shock or fire.



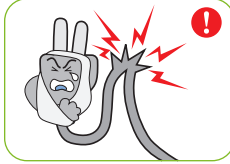
Do not pull the cord when taking out the power cord, and keep wet hands away from connecting plug.

► Risk of electric shock or fire.



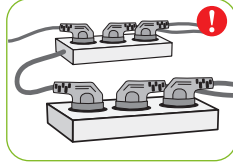
Never pull the plug out of the outlet during the incubation period.

► Incubation will be interrupted.



Do not twist or crush electric cord.

► Risk of electric shock or fire.



Do not insert multiple connecting plugs in an outlet.

► Risk of fire or electrical overload.

## Setting Cautions

**CAUTION** Be careful the details below when you use.

Do not install in dusty or dirty environment.

► Risk of damage or fire within the incubator.



Do not install under the direct sunlight.

► Risk of fire or interference with the incubation process.



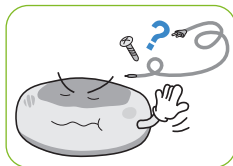
Do not install in moist or humid environment.

► Risk of fire or electric shock.



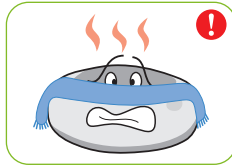
Do not install in excessively cold or hot conditions, cigarette smoke, etc.

► Risk of interference with the incubation process.



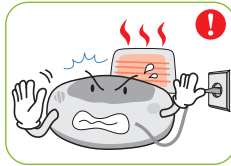
Do not use any other non-standard parts except those provided.

► Risk of damage or hatching failure.



Do not cover the ventilating opening.

► Inner temperature can rise, interrupting incubation.



Install away from heat sources.

► Risk of damage to the incubator case and interference with the incubation process.



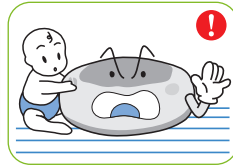
Ensure that the incubator is installed on a stable surface away from edges.

► Risk of damage to incubator and eggs and user from accidental knocks or drops.

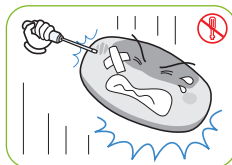


Do not turn the incubator upside down.

► Water will pour out of the incubator, and view window can be dropped or damaged.



Children should be supervised to ensure that they do not play with the appliance.



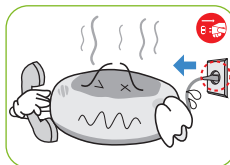
Do not disassemble or modify the incubator in any way.

► Risk of electric shock or fire.



Please ensure that no small objects get into the holes on the incubator.

► Risk of electric shock or fire.



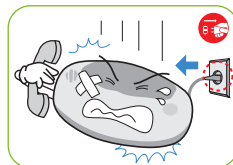
If the incubator sounds strange or emits smoke contact your service center.

► Risk of electric shock or fire.



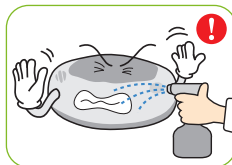
Clean the incubator thoroughly before storing.

► Risk of electric shock or fire.



If the incubator requires repair disconnect from the power supply and please contact to your service center.

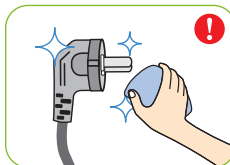
## Cleaning Cautions

**CAUTION** Be sure to disconnect the electric cord from the outlet before cleaning.

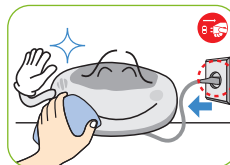
Do not spray cleanser directly on the incubator surface.



Clean the incubator by a soft cloth with a neutral detergent.

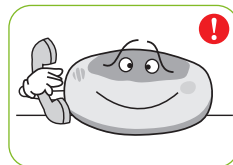


Brush away dust on the plug with a dry cloth.



Do not use chemicals like wax, benzene, alcohol, thinner, aromatic, or lubricant, etc.

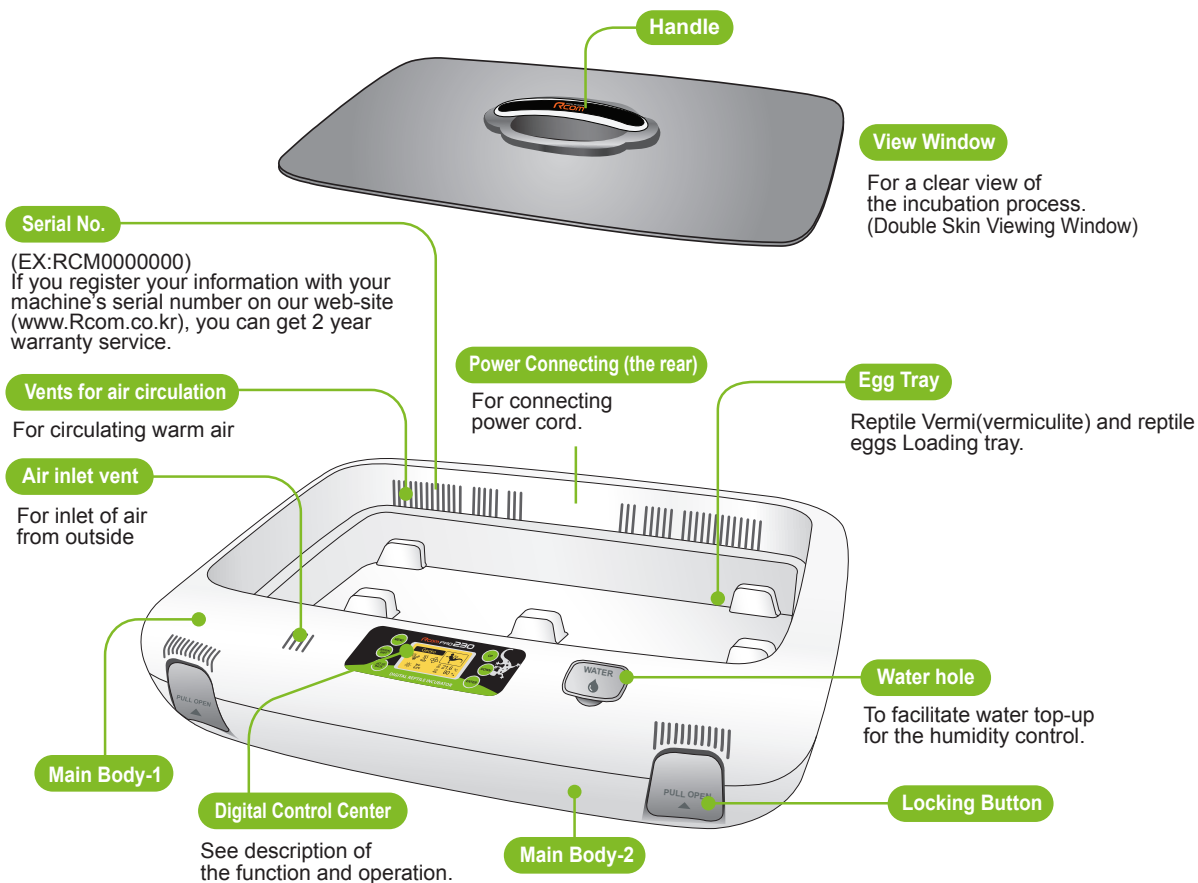
► Risk of electric shock or fire.



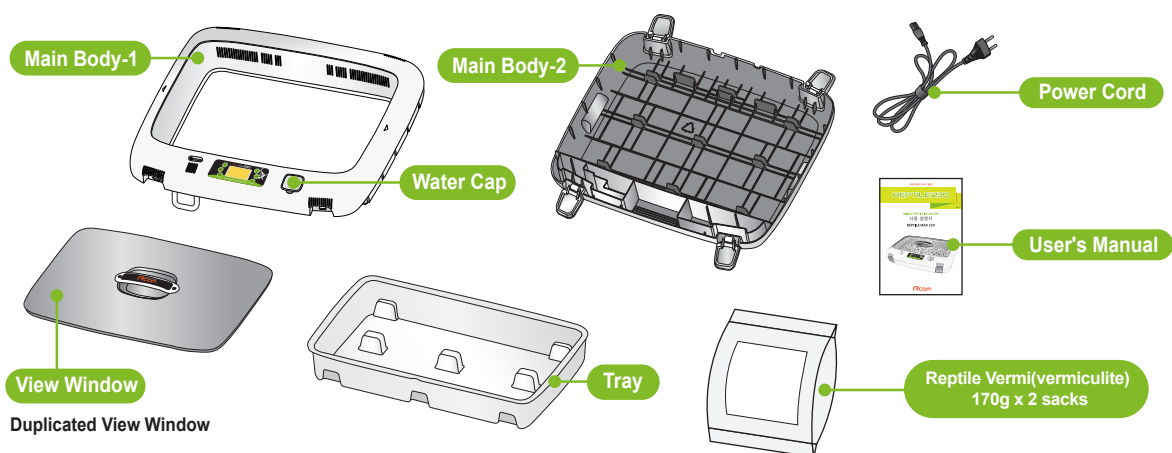
For special cleaning of inner part per year, contact to the service center.

► If you don't clean the inside of incubator for a long time, dust can cause some trouble or a fire.

#### Identification of Parts



#### Basic Components



## Name &amp; Function of Operation Parts

## Menu Button

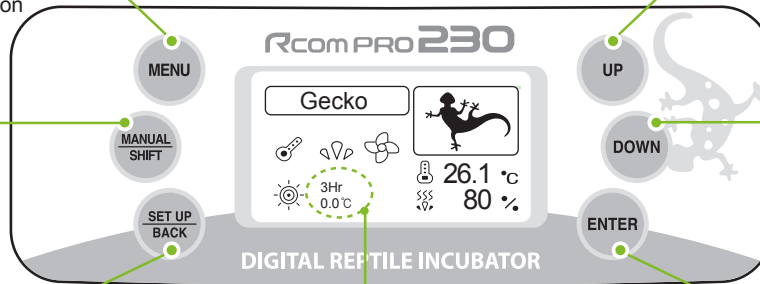
Select Reptiles  
Incubation Termination

## Select Button

Select Auto/Manual  
Pass to next stage

## Function Button

Other function display,  
Return to previous stage



D.T.G Display

## Up Button

Temp. & Humi. UP  
Setting Value Change

## Down Button

Temp. & Humi. DOWN  
Setting Value Change

## Input Button

Save input and  
Pass to next stage  
Setting Value Check



## What's 'Temperature&amp;Humidity Setting'?

This is that you set up temp.&humi. As you want to have inside of the machine.

ICON	NAME AND FUNCTION	ICON	NAME AND FUNCTION
<p>Reptile Icon Display</p>	<p><b>**Choose a kind**</b></p> <ul style="list-style-type: none"> <li>* Chameleon</li> <li>* Snake</li> <li>* Alligator</li> <li>* Gecko</li> <li>* Turtle</li> <li>* Tortoise</li> <li>* Bear.Dragon</li> <li>* Uromastyx</li> <li>* GreenPython</li> <li>* Python</li> <li>* Iguana</li> <li>* Others</li> </ul>		<p>Current Temperature Display Temperature Abnormal Display</p>
	Species of Reptiles		<p>Heater Stop Display Heater Operation Display</p>
	Daily Temperature Gap Operation Display		<p>Humidification Stop Display Humidification Operation Display</p>
<p>3Hr 0.0°C</p>	Daily Temperature Gap Setting Value Display		<p>Water Supplement Humidity Abnormal</p>
	Current Humidity Display Humidification function OFF		<p>Power Failure Notification</p>

## SET UP(Other Functions)

▶ Push SET UP key and then select each function icon using UP/DOWN key(ENTER)

<b>T.CAL</b> Temperature Calibration			
<b>H.CAL</b> Humidity Calibration			
<b>ALARM</b> Abnomal High Alarm	<b>High Temp</b> <b>HiErr</b>	Alarm sounds when incubator temp. is higher than setting value because of room temp. change or heating system disorder 0.0 ~ 5.0°C (0 ~ 9°F) [Default Setting : 0°C / 1 change in degrees]	
<b>ALARM</b> Abnomal low Alarm	<b>Low Temp</b> <b>LoErr</b>	Alarm sounds when incubator temp. is higher than setting value because of room temp. change or heating system disorder 0.0 ~ -5.0°C (0 ~ -9°F) [Default Setting : 0°C / 1 change in degrees]	
<b>Unit</b>		Selecting Centigrade (°C) and Fahrenheit (°F) * Default Value : Centigrade (°C)	
<b>Light</b>		LCD Backlight management setting * Always On : Always BackLight On * Always Off : Always BackLight Off * Event On : 20 Sec. ON with Key input * Default Value : Always On	
<b>Sound</b>		ON/OFF Setting for Melody, other alarms * Default Value : ON	
<b>ALL RESET</b> Factory setting	<b>ALL RESET</b>	It returns to factory setting when you change the initial setting at discretion.	
<b>Info</b>		Basic information of Incubator (version Indication)	

## Easy Function Operation

※ If you want to change setting value, keep pressing "SET" button and change the value.

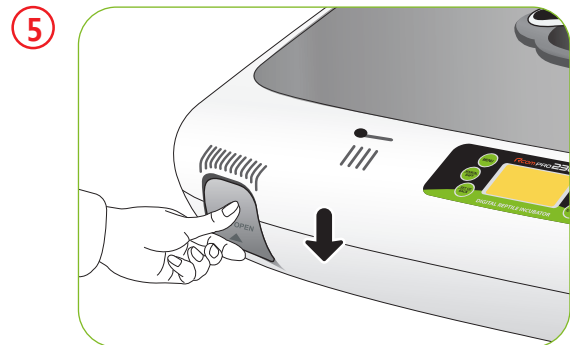
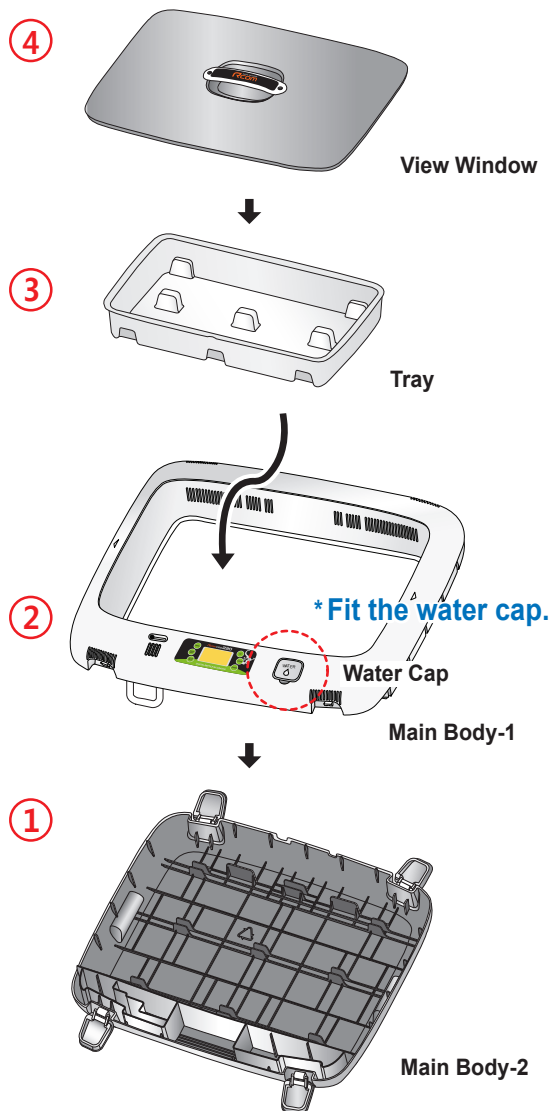
Function	How to Operate	Page
<b>Automatic Mode Incubation</b>	▶ Select the Species of Reptile ▶  2 Sec.	<b>11</b>
<b>Other(Manual) Mode Incubation</b>	▶  Select the Species of Reptile ▶  ▶ Temp. Setting Humi. Setting D.T.G Setting ▶	<b>12 ~ 14</b>
<b>How to change Setting under Incubation</b>	Once: Temp. Setting 2 times: Humi. Setting 3 times: D.T.G Setting ▶  ▶	<b>16</b>
<b>Incubation Termination</b>	Screen on Incubation  ▶ System finish Are you sure?  Select YES ▶	<b>15</b>
<b>Incubator Initialization (Factory Setting)</b>	▶  "All Reset" ▶  ▶	<b>15</b>
<b>°C ↔ °F</b> How to change	▶  °C / °F ▶  ▶  °C ↔ °F ▶	<b>15</b>
<b>How to turn off Humidification Function</b> (In case of low humidity incubation)	Screen on Incubation  2 times ▶  Under 40% ▶ "OFF" ▶	<b>16</b>

### What is an Incubation Room?

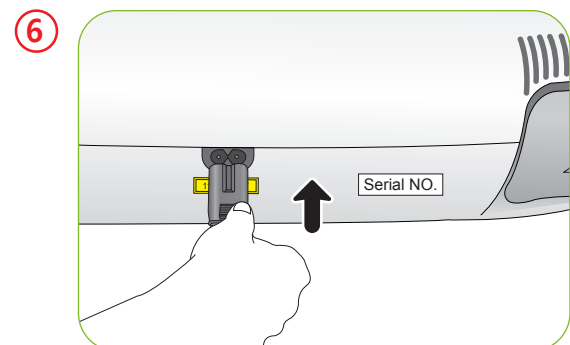
Incubation room? It means the place where the incubator is installed and operated, and as it has much effect on incubation rate according to the environment of incubation room, it is good to install incubator at the place where there is little noise and vibration in the vicinity and the temperature range isn't severe in the temperature of 22~25°C (71.6~77°F). In particular, as there are many cases that the temperature falls rapidly in the nighttime differently from the daytime, it is necessary to check certainly, and during daytime, incubator must not be exposed directly to the sunlight.

### How to Assemble

**When installing reptile incubator, in case that the temperature of incubation room is higher than its set temperature, the temperature control of incubator inside may not be done normally. The set temperature of incubation room should be around 4°C (7.2°F) lower than incubator set temperature.**



► Lock the four locking buttons at the front and rear of the incubator.



► Insert the power cord in the socket at the back of the main body.

► Register Serial NO. in the back of main body (up). Free warranty period is extended to 2 years. (See 17 page)

### Preparation for Incubation

**!** Before inserting eggs, please start incubation after checking if all functions work without any problem by operating incubator sufficiently.

Environment condition of incubation room for installing reptile incubator.

(temperature : 22~25°C (71.6~77°F) / humidity : RH 30~50%)

► It is for making water supply be smooth when beginning incubation, and fill water for humidification in the water tank located on [Fig-1] ①, ② of downside main body.

► See [Fig-7] for ③ of [Fig.-1].

**!** In case of moving with water filled, as it may cause a breakdown, fill water after installing it at the place where you want to incubate.

► Heater part for humidification in the upper side of main body[Fig. 2] should be submerged in the water of the inside of water tank in case of assembling with the lower part of main body. Please be sure to check and close sight glass and plug in to operate for about 30~40 minutes.

**Tip** Please be careful not to give any heavy power or shock on the heater part for humidification in the upper side of main body as it may be a cause of breakdown. Some foreign substance is created on the heater part after use, however, there isn't any problem caused of it. (See cleaning method)

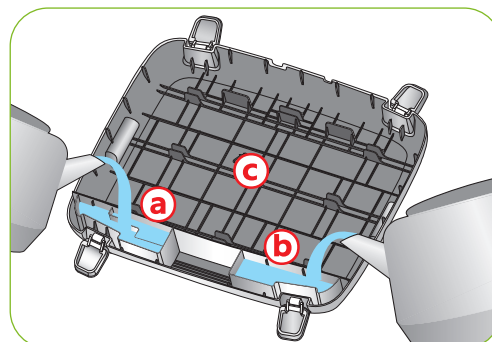
► In case of using without inserting water, it is necessary to turn off its humidifying function. (See humidifying function OFF method)

► Put 4 bags of reptile vermiculite and 1500cc of water into tray and mix. [Fig-3]

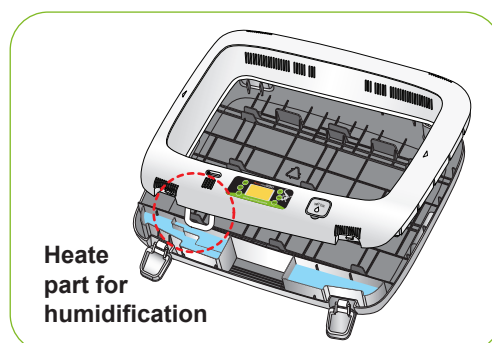
**Tip** It is possible to purchase a vermiculite for reptile incubation separately.

► It has an automatic humidifying function, however, as the inside humidity of incubator depends on the water quantity mixed with reptile vermiculite, please be sure to check the incubation environment of reptile.

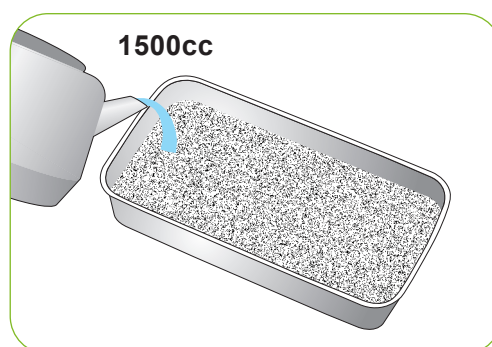
**!** In case that the reptile vermiculite was completely dried, it may be in very dry state by absorbing the surrounding humidity of incubator inside and egg. It is good to start after understanding the required environment for each reptile kind and making previous test if incubation environment is proper to minimize incubation failure.



[Fig-1]



[Fig-2]



[Fig-3]

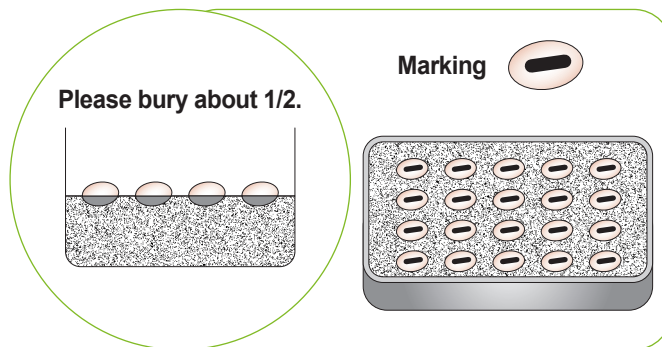
### 3. Incubation

#### (1) Preparation for Incubation / How to Start Incubation

**REPTILE 230**

- ⚠ It is good for reptile vermi not to be reused after incubation. Incubation rate falls notably because of Bacteria contamination. [It is possible to purchase at the place you purchased.]

- ▶ Bury about 1/2 of egg to be incubated in reptile vermin to fix egg. [Fig-4]  
(During incubation, check the state of eggs at least once a week and remove unfertilized eggs, growth-stopped eggs and moldy eggs.)



[Fig-4]

- Tip When reptile laid eggs, they should be moved to the incubator as the first direction when laying eggs was. It is convenient to making a marking on the egg in order for them not to be changed.

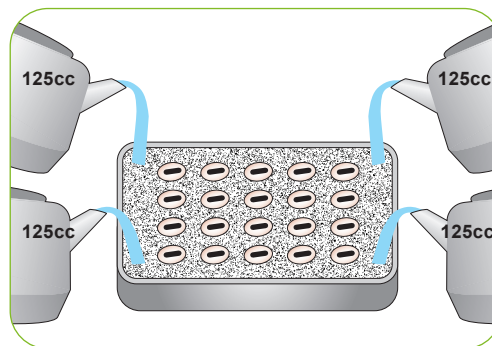
- ▶ Set the environment of egg to be incubated to install the prepared tray in the inside of incubator and close the lid of sight glass tightly.



[Fig-5]

- ⚠ In case that sight glass and water cap weren't closed completely, temperature and humidity aren't normally operated. Therefore, please be careful.

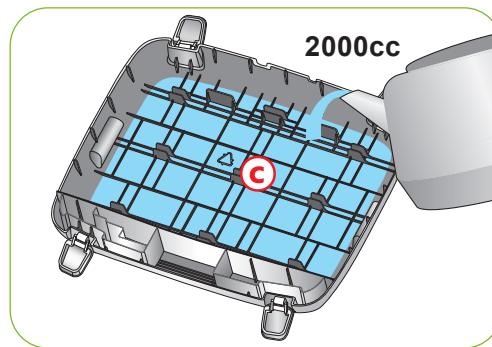
- ▶ Check water for humidification every day and makeup water as seen in [Fig.-5]. Then, it is necessary to stop it when the Styrofoam ball in the inside comes up.



[Fig-6]

- ⚠ Even though the marking humidity of incubator is normal, it is necessary to check the humidification state of vermiculite at least once a week and check the state of vermiculite once a month to makeup 500cc of water as seen in [Fig.-6].

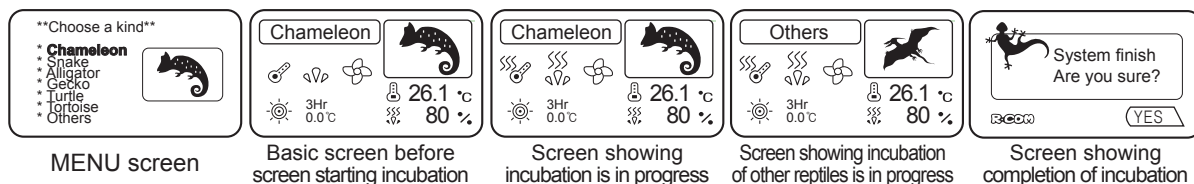
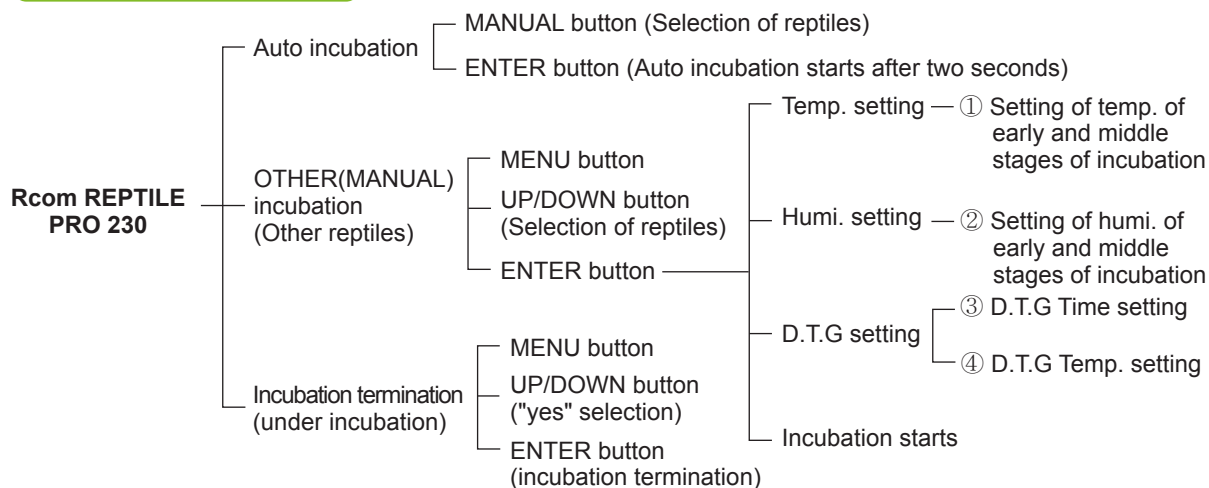
- ▶ In case that the humidity of incubator inside isn't controlled into high humidity of RH 90~95% according to the environment of incubation room, pour 75cc of water for humidification on each edge of 4 tray sides for incubation where without any egg meddle [Fig.-6] and pour 2000cc of water on © of [Fig-7] main body(bottom).



[Fig-7]

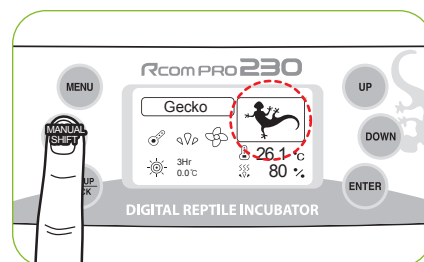
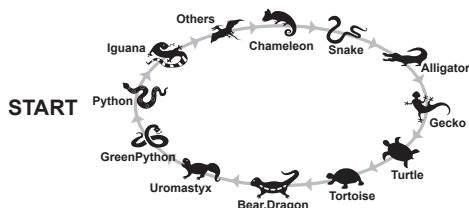
- ⚠ In case of humidifying inside humidity over RH 60%, be sure to fill main body(bottom) of [Fig.-7] with 2000cc of water, and in case of setting incubation humidity into less than RH 60%, it isn't necessary to pour water on the bottom. In case of incubating at low humidity, water may be created naturally on the bottom by dew condensation. Therefore, it is necessary to check sometimes to remove it.

### Incubation Modes



### Incubation start with Automatic Mode

The optimum incubation environment of the reptiles on the menu screen is memorized in the micro chip. User can incubate easily using this function.



- ▶ Press MANUAL button to select species of reptiles in basic screen.
- ▶ Select species of reptiles and press ENTER button for about 2sec. then it starts incubation with automatic mode.

**Tip** In auto incubation, user only needs to select type of reptiles as incubation environments such as optimum temperature, humidity etc. are automatically controlled. User can change incubation environments if needed.

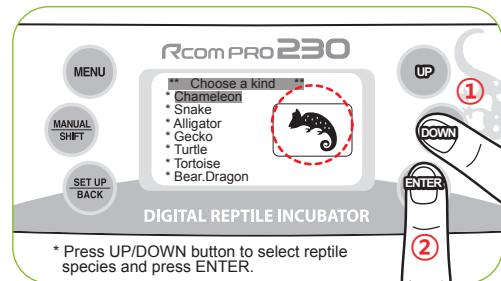
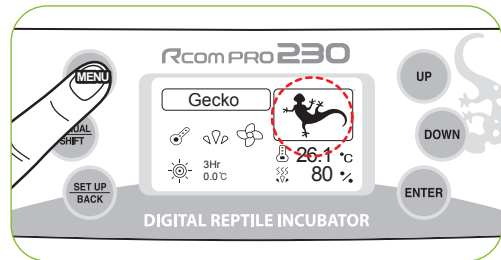


## Incubation start with Manual Mode

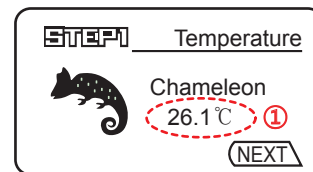
This mode helps users to set temperature, humidity etc. according to their needs. This mode is ideal for those persons who are experienced in incubation.

- ▶ Press MENU button on basic screen.
- ▶ Select the species of reptiles with UP/DOWN button and press ENTER button then it goes to incubation conditions setting mode.
- ▶ Set required temperature, humidity, and D.T.G setting with UP/DOWN button, and press ENTER button to pass to next step.

 If there is no proper option, please select option other reptiles, Refer to Page 14.

**STEP1** Temperature setting

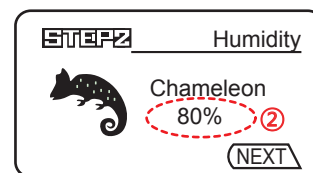
- ▶ Incubation temperature input on the menu screen ① is memorized in the micro chip. User can change temperature randomly.  
[Basic memory value : ① it depends on reptile kind.]




Temperature Setting

**STEP2** Humidity setting

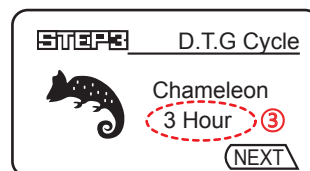
- ▶ Incubation humidity input on the menu screen ② is memorized in the micro chip. User can change humidity randomly.  
[Basic memory value : ② it depends on reptile kind.]



Humidity Setting

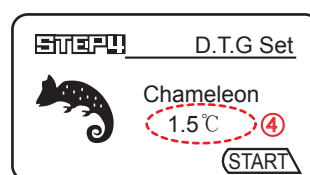
 Temperature and humidity is optimized when Rcom products are released. We do not recommend customers to recalibrate by their own. If you need to recalibrate, please visit our website ([www.rcom.co.kr](http://www.rcom.co.kr)→Download→Manual) or ask purchase place. Because of low price thermometers and hygrometers are not accurate, we recommend you to use special calibrated thermo-hydrometer. (Poultry only thermo-hydrometer: check Rcom website)

- Daily temperature range function means as follows  
It is a function artificially making the highest time zone of temperature by sun at the natural condition, and it is a function that can raise the incubation success rate of reptile by the optimal incubation environment by raising temperature at the fixed time zone.


Hi-Temp Cycle daily  
temperature range time  
set screen

### STEP3 Daily temperature range time set-up

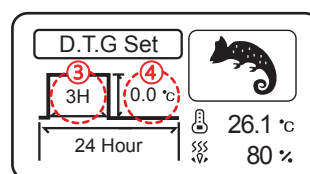
- In Daily temperature range function ③, user can change daily temperature range time randomly.  
[Basic memory value : ③3 hours]


Hi-Temp Set daily  
temperature range  
temperature set screen

### STEP4 Daily temperature range temp. set-up

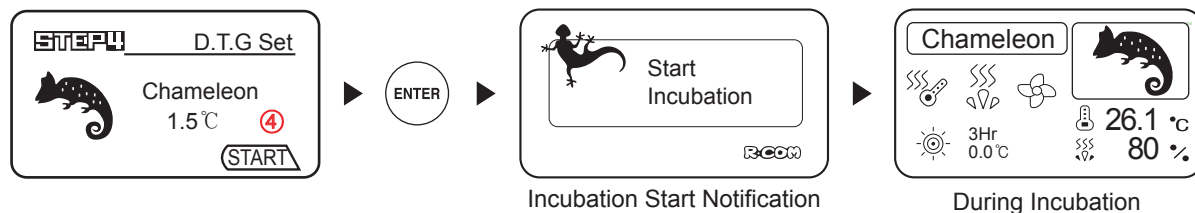
- It is the function raising daily temperature range temperature of ④ as much as daily temperature range time ③ of above-mentioned STEP3, and in case of general reptile, its temperature is set about 1.5°C (2.7°F) higher than present incubation temperature.  
[Basic memory value : ④it depends on reptile kind.]

ex) In case of the reptile that its incubation temperature is ① 26.1°C (78.98°F), if daily temperature range time is set as ③3 hours and daily temperature range temperature is set as ④1.5°C (2.7°F), incubation environment is changed into 27.6°C (81.68°F) once a day and for 3 hours.


Daily temperature  
range set screen

## [ Setting Finish and Incubation Start ]

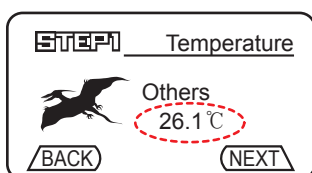
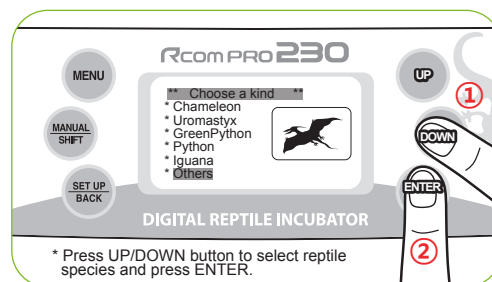
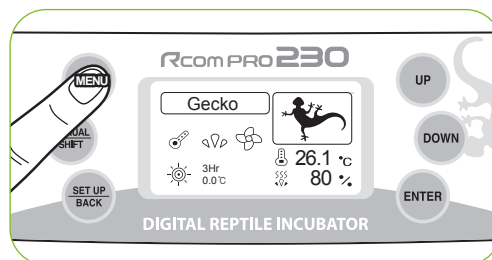
- After setting daily temperature range as the last step, press ENTER button to start Manual Mode incubation with incubation starting message/melody.



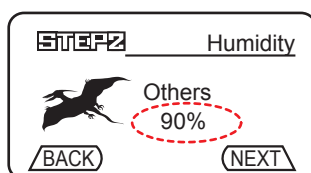
## Incubation Start for other reptiles

This mode helps users to set temperature, humidity etc. according to their needs. This mode is ideal for those persons who are experienced in incubation.

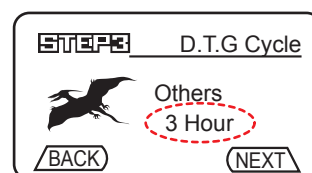
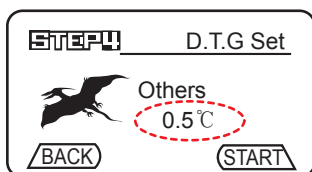
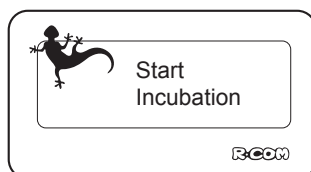
- ▶ Press MENU button on basic screen.
- ▶ Select reptile using UP / DOWN button and press ENTER button to enter into incubation environment set-up mode.
- ▶ Reset the number for daily temperature range of temperature and humidity with UP / DOWN button and press ENTER to save set value.  
[See page 12, and 13]



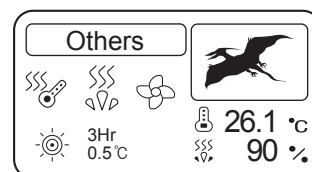
Temperature Setting



Humidity Setting

Hi-Temp Cycle daily  
temperature range time  
set screenHi-Temp Set daily  
temperature range  
temperature set screen

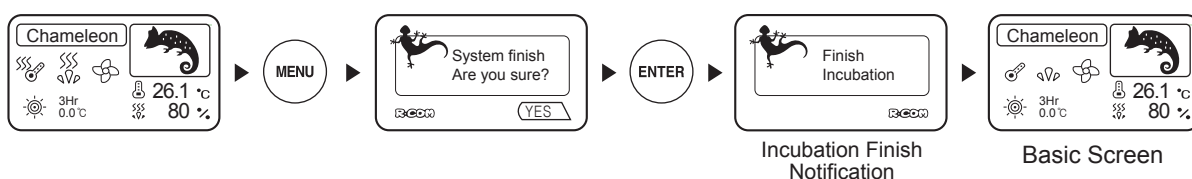
Incubation Start Notification



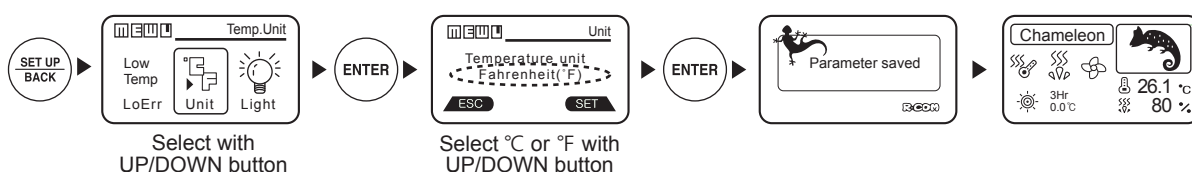
During Incubation

### Incubation Termination

- ▶ During incubation, press MENU button then you can see a message as "System finish, Are you sure?"
- ▶ Select YES with UP/DOWN button and press ENTER.

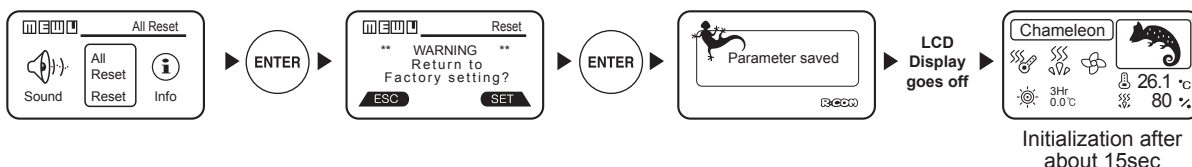
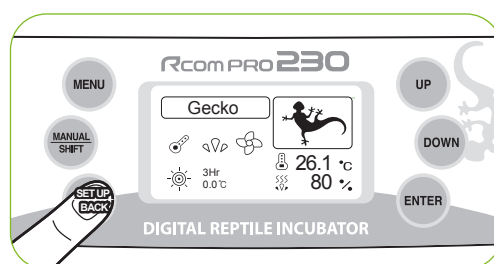


### How to change Cels. & Fahr.



### Return to Factory Setting

- ▶ When users have changed the incubator settings, but want to return to factory setting.
- ▶ Press SET UP button and select All Reset with UP/DOWN button. Then, press ENTER. If you press ENTER button once again, LCD display goes off with message & alarm. Incubator returns to factory setting after about 15 sec.

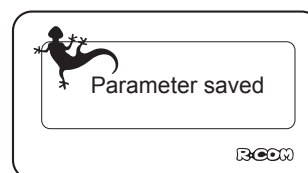
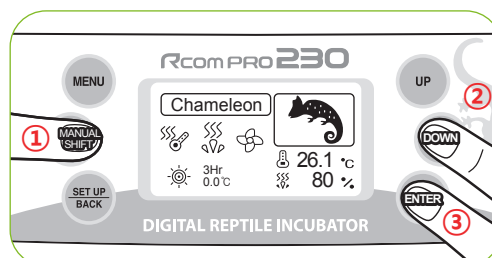


## Incubation Condition Reset during Incubation

- ▶ It is used for resetting incubation environment easily during automatic and manual incubation. In the screen during incubation, press MANUAL button to see that temperature set window flickers. To change temperature, reset its number with UP / DOWN button and press ENTER button to save set value with message/alarm sound, and move cursor to the next step(temperature and humidity daily temperature range time set and daily temperature range temperature set).

In case of not wanting to change the numerical value of incubation environment, press MANUAL button to move to the next step. Also, in case of not pressing any button for about 10 seconds, it is changed into incubation screen.

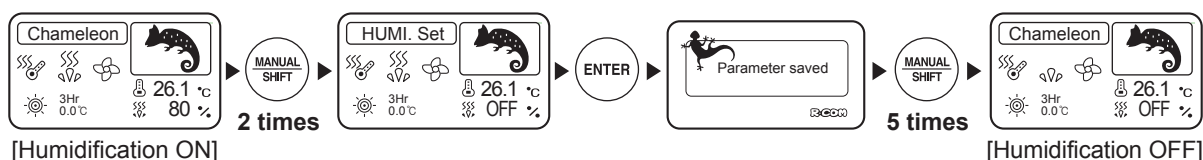
- ▶ You can go directly to the needed setting mode by pressing MANUAL button several times according to your needs. It can be used when you want to check the current incubation condition during incubation.
- ▶ If you press ENTER button, LCD display indicates setting Temperature & Humidity.



Setting Save Message



## How to Turn ON/OFF Humidification Function

- ▶ In case of using without inserting water for humidification or in case of incubating at low humidity of less than RH 40%, it is necessary to stop humidifying function.
- ▶ Press MANUAL button for 2 times and press DOWN button consecutively at humidity set until "OFF" is displayed and press ENTER button to turn Off humidifying function. Reversely, set into more than RH 40% to turn On humidifying function.

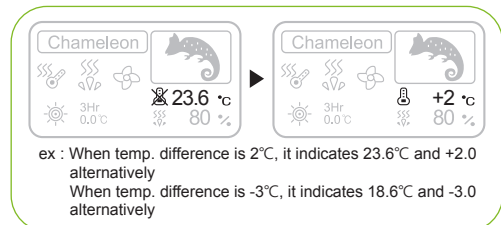


In case of using without putting water for humidification in or incubating at low humidity of less than RH 40%, it is necessary to stop humidifying function. In case of not supplying water for humidification turning on humidifying equipment, the humidifying unit part is damaged or the lifespan of part is shortened noticeably. Be sure to turn OFF humidifying function equipment.

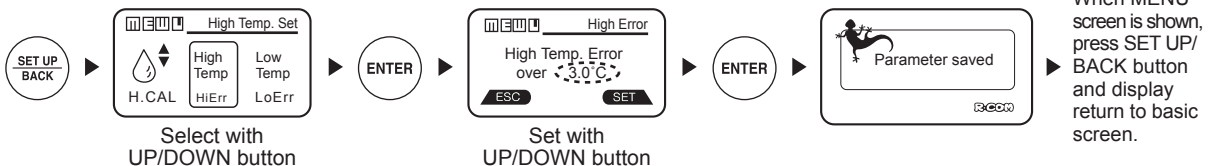
#### Abnormal high, Low temperature alarm setting method

- ▶ What is abnormal alarm function? It is an alarm function notifying it to user in case that the temperature of incubator inside raised or decreased abnormally.
- ▶ When incubator temperature is different from setting value, icon is changed  → , and display indicates current temp. and temp. difference alternatively.

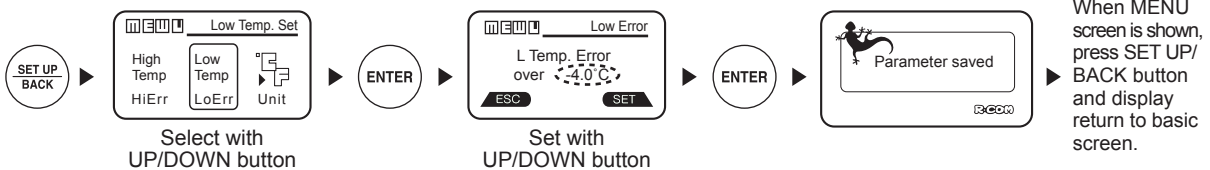
**!** Alarm call automatically turned off after 1min. but you should press ENTER button to switch off alarm indication.





\* How to Set Abnormal High Temp. Setting (When incubator temp. is higher than setting temp.)  
[Setting Range: 0 ~ 5°C(0 ~ 9°F), Default Setting : 0°C]





\* How to Set Abnormal Low Temp. Setting (When incubator temp. is higher than setting temp.)  
[Setting Range: 0 ~ -5°C(0 ~ -9°F), Default Setting : 0°C]

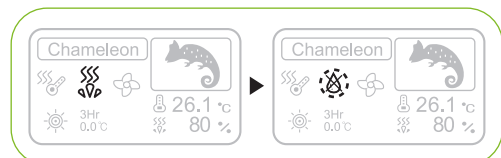
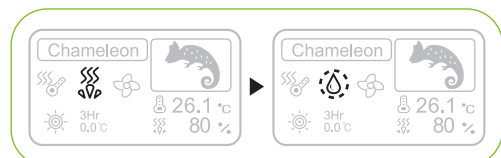


#### Water Shortage Detecting Function


- ▶ When water is short, humidification icon is changed  →  and water supplement alarm sounds after 5 min. This alarm continues every 30 sec.

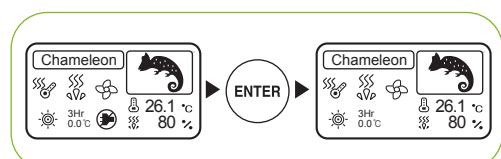
**!** It takes about 1min. to return to normal display after you refill water.

- ▶ When there is any problem on water detecting sensor, humidification icon is changed like this  → , and alarm sounds with message.



#### Power Failure Alarm Function

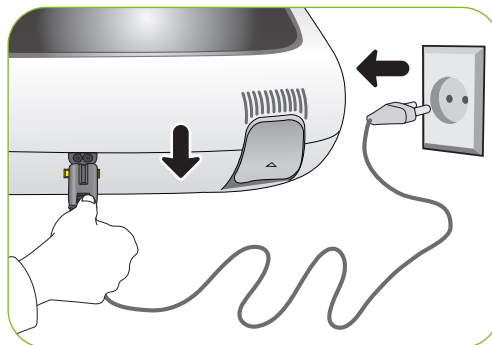
- ▶ When incubator temperature is different from setting value, icon is changed , and display indicates current temp. and temp. difference alternatively.



### Disassembling and Cleaning the Incubator

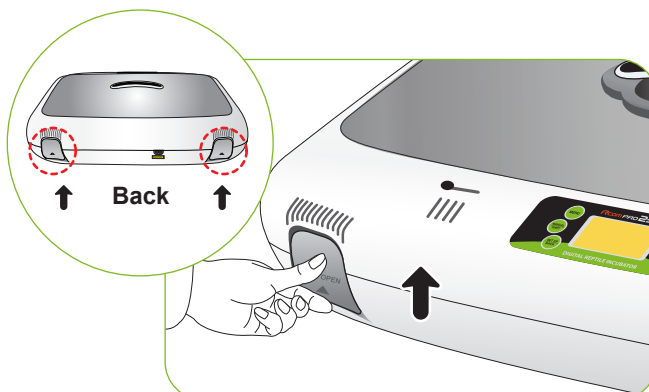
- ▶ Pull out the electric cord from the connecting jack and also take out the plug from the outlet.

**!** In case of turning off the power immediately after using incubator, it may be a cause of breakdown because of the humidity remaining in the inside of main controller. Then, it is necessary to turn it off after operating about for 1 hour at the state of removing water for humidification of the incubator inside or reoperate it after opening sight glass and naturally drying for 2~3 hours in order to use machine for a long time.



Unlock and remove the locking buttons for four parts at the front and back of incubator by pulling them forward.

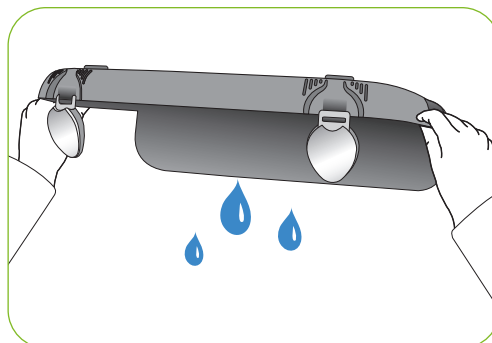
Dry main body(bottom) and tray after washing with water cleanly and dry main body(up) about for one day at airy area in order to remove remaining humidity in the inside completely.



- ▶ When using humidification function, a lot of alien matter sticks to the humidification heating element ①. This may not cause failure, but when terminating incubation please clean the humidifying heater lightly with a soft brush.

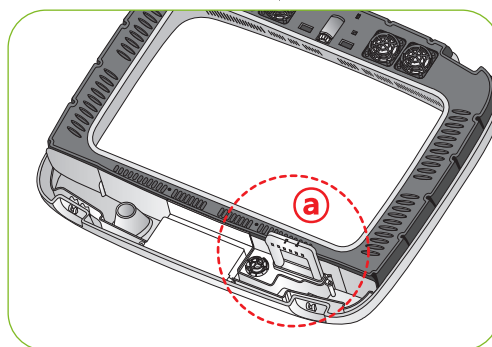
**Tip** In case of using distilled water as water for humidification, it is possible to reduce foreign substance(scale) noticeably.

- ▶ If you place the main body(upper part) on the floor, please don't let the humidification heating part touch with the floor.



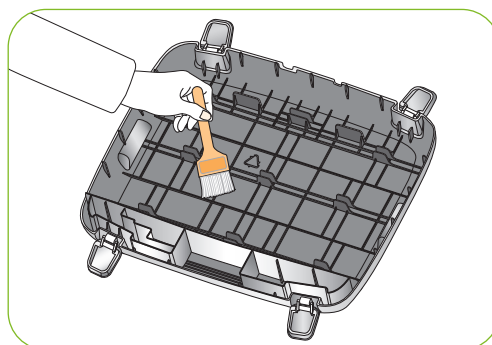
**!** In case of giving some shock on the heater part ① for humidification or drawing it with a sharp thing, the heater for humidification is damaged.

**!** In order to reduce foreign substance(scale) of the heater part ① for humidification, it is recommendable to use distilled water as water for humidification. In case of wanting to use other water, be sure to use it after inquiring to the store purchased.

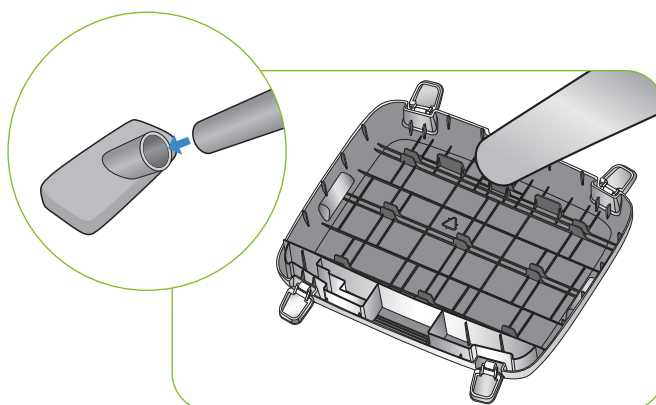


Start the vacuum cleaner to remove the dust as shown on the right and thoroughly shake out the minute dust with a fine brush.

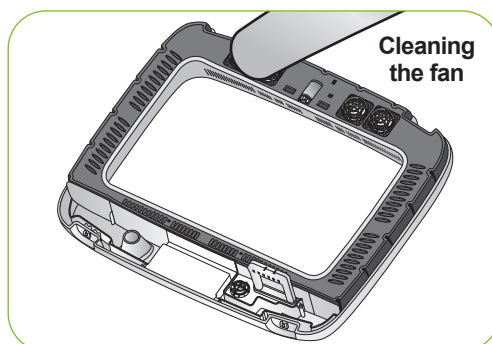
**Tip** If the incubator goes through incubations several times, dust, shell, etc. accumulate inside the main body, which may cause a break down, so be sure to clean the product before storage.



**!** In case the incubator clean status is poor which may cause fan noisy or stopping.

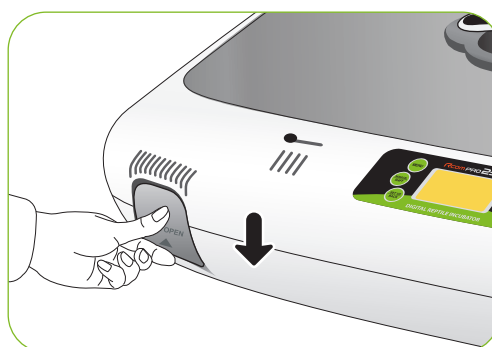


If you finish cleaning the incubator, reassemble it in the reverse order of disassembly. Wipe out outside the main body with a wet cloth and dry it in a cool and well-ventilated place before storage.



**Tip** [Refer to How to assemble on Page 7.]

**!** Don't clean the product with organic solvents such as benzene, thinner, etc. which may cause deformation or decoloration.



## 7. Understanding

(1) Recommended temp. and humi.  
table by reptile during incubation

**REPTILE 230**

### Recommended temp. and humi. table by reptile during incubation

Reptile Grouping	SPECIES	INCUBATION PERIOD	TEMPERATURE	HUMIDITY	DAILY TEMPERATURE GAP
Chameleon	Veiled Chameleon	145-180 days	26.1°C / 79°F	80%	
Turtle	Box Turtles	70-80 days	27.8°C / 82°F	85%	
	Sea Turtle	58-62 days	29.4°C / 85°F	95%	
	Painted Terrapin Turtle	72-80 days	29.4°C / 85°F	95%	
	Snapping Turtle	60-85 days	29.4°C / 85°F	95%	
Tortoise	Desert Tortoise	85-90 days	30.6°C / 87°F	80%	
	European Tortoise	56-84 days	30.6°C / 87°F	75%	
	Mediterranean Tortoise	56-70 days	30.6°C / 87°F	75%	
Snake	North American King Snake	60-65 days	28.3°C / 83°F	90%	
	North American Milk Snake	60-65 days	28.3°C / 83°F	90%	
	North American Rat Snake	60-65 days	28.3°C / 83°F	90%	
	Corn Snake	55-60 days	29.4°C / 85°F	85%	
	King Snake	60-65 days	28.3°C / 83°F	90%	
	Amazon Tree Boa	40-50 days	31.1°C / 88°F	95%	
	Python	60-65 days	32.2°C / 90°F	90%	
Iguana	Green Iguana	73-80 days	29.4°C / 85°F	85%	
Lizard	Bearded Dragon Lizard	60-70 days	28.9°C / 84°F	85%	
	Uromastyx	55-65 days	33.9°C / 93°F	92%	1.5°F/3hour
	Chinese water dragon	60-75 days	29.4°C / 85°F	85%	
	Tegu	60-70 days	28.3°C / 83°F	90%	
	Lizard	50-60 days	30.6°C / 87°F	87%	
	Day Gecko	50-65 days	27.8°C / 82°F	75%	
	Gecko	50-55 days	29.4°C / 85°F	88-90%	1.5°F/3hour
Alligator	Alligator (Mississippiensis)	63-84 days	31.7°C / 89°F	95%	
	Crocodile (Crocodylus porosus)	89-95 days	30.6°C / 87°F	95%	
Other	Unknown Reptile	50-90 days	30.6°C / 87°F	85%	

※ The recommended environmental conditions as the reptiles may differ slightly.

**Troubleshooting**

For more detailed self-diagnosis, see Rcom homepage “SELF DIAGNOSIS” category.

All our Rcom digital products of Autoelex Co., Ltd. are made by precision systems under strict quality control. But occasionally some defective products are found on the way of their distribution. If any problem occurs, then please contact Autoelex service center or distributors in your country. We will do our best to solve the problems, if any, for you. This product is designed in modular mode, so for its repair, if any, a qualified person can replace the part concerned with ease.

\* Complaint Department : 82-55-337-2560

\* E-mail Receipt : Rcom@Rcom.co.kr

Troubles	Expected Causes (Possibility)	Countermeasures
<b>No signs of power to the incubator.</b>	<ul style="list-style-type: none"> <li>▶ Check if power cord was connected well.</li> <li>▶ Check power failure.</li> <li>▶ Check if plug is defective.</li> </ul>	<ul style="list-style-type: none"> <li>▶ Try to plug-in again.</li> <li>▶ Check other electric and electronic product nearby.</li> <li>▶ Check after moving to other socket.</li> </ul>
<b>When temperature is too high / When temperature is too low</b>	<ul style="list-style-type: none"> <li>▶ Check set temperature.</li> <li>▶ Check if FAN for air circulation doesn't rotate.</li> <li>▶ Try to make factory initialization. [See 11 page]</li> </ul>	<ul style="list-style-type: none"> <li>▶ Adjust set temperature to wanted temperature.</li> <li>▶ Unplug from socket and separate main body to clean FAN area for air circulation with a brush or writing brush.</li> </ul>
<b>When humidity is too high / when humidity is too low</b>	<ul style="list-style-type: none"> <li>▶ Try to make factory initialization. [See 11 page]</li> </ul> <p>&lt;When low&gt;</p> <ul style="list-style-type: none"> <li>▶ Check if sight window closed well.</li> </ul> <p>&lt;When high&gt;</p> <ul style="list-style-type: none"> <li>▶ Check surrounding environment.</li> <li>▶ Check if tray inside or main body(bottom) contains water.</li> </ul>	<p>&lt;when low&gt;</p> <ul style="list-style-type: none"> <li>▶ Refill water sufficiently.</li> <li>▶ Check if foreign substance was inserted and close it again.</li> </ul> <p>&lt;when high&gt;</p> <ul style="list-style-type: none"> <li>▶ Adjust environment of incubation room. [See 8 page]</li> </ul>
<b>The machine makes some noise.</b> It is normal that the machine emits some sounds because it uses air circulation fan for working.	<ul style="list-style-type: none"> <li>▶ Check if there is some other object on the incubator.</li> <li>▶ Check if there is some vibration on the floor or it was installed on the desk.</li> <li>▶ Check if some foreign substance was attached to FAN area after incubation.</li> </ul>	<ul style="list-style-type: none"> <li>▶ Remove all the objects put on the incubator.</li> <li>▶ Move incubator to the safe place to install.</li> <li>▶ Unplug from socket and separate main body to clean FAN area for air circulation with a brush or writing brush.</li> </ul>
<b>Water leaks from the machine.</b> * In case of keeping at high humidity, there may be some dew.	<ul style="list-style-type: none"> <li>▶ As reptile incubator operates at high humidity, there is some dew on the sight window. It isn't a breakdown but natural phenomenon.</li> </ul>	<ul style="list-style-type: none"> <li>▶ Please install within the condition of incubation room.</li> </ul>



**Before inserting eggs, please start incubation after checking if all functions work without any problem by operating incubator sufficiently.**

## Specification

1-1 Name : Rcom Reptile PRO 230

1-2 Model : PX-R230

Power	AC 100~120[V], 50/60[Hz] AC 220~240[V], 50/60[Hz]		
Temp. Control Range	20 ~ 42[°C] / 68 ~ 107.6[°F]	Outside Environment Temp.	Optimal range : 22 ~ 25[°C] / 71.6 ~ 77[°F]
			(Low) 20[°C] / 68[°F] (High) 26[°C] / 78.8[°F]
Humi. Control Range	40 ~ 95[%] (It can be changed according to the conditions)		
Temp. and Humi. accuracy	±0.5[°C], ±0.9[°F] / ±5[%]		
Capacity	230[eggs] (Different from the species of egg)		
Power Consumption	Average 65[W] Max. 120[W]		
Product Weight	6.65[Kg]		
Product Size	(W)633×(L)523×(H)171[mm]		
FUSE Standard	250[V] 2.0[A] (Ø5*20[mm])		

Register your product Serial No. on our website for free 2 years gurantee.

Refer to website for how to register. (Free 1 years gurantee in case not registerd.)

※ Product Registration Procedures

If you are a new member of Rcom, you need to log in our website at [www.Rcom.co.kr](http://www.Rcom.co.kr)

1. Click "SIGN UP" on top of the right corner.

2. Fill out the information on the blanks.

If you already registered your information on the Rcom website, please log in to [www.Rcom.co.kr](http://www.Rcom.co.kr).

1. Click "Login" on top of the right corner.

2. Select "Customer" and click "Register Products".

3. Fill out the information on the blanks.

You will need below information to register on our website.

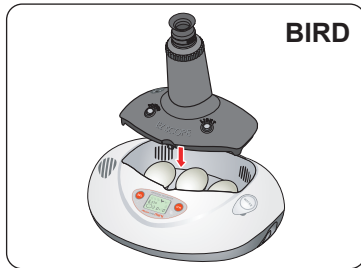
1. Your name

2. Your (home/company) address & Email address, country

3. Your product(model) name & Serial number

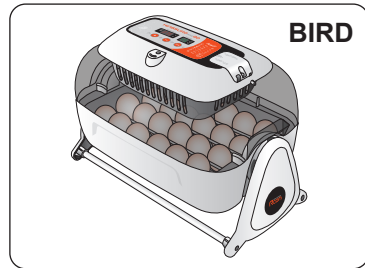
4. Date of purchase & Name of purchased shop you bought from

## Rcom Incubator Series



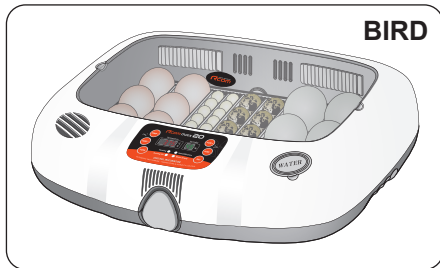
**BIRD**

**Rcom PRO MINI Package (PX-03S)**



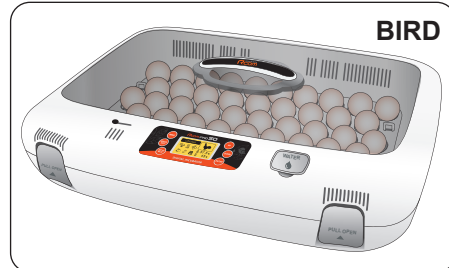
**BIRD**

**Rcom KINGSURO MAX 20 (MX-SURO)**



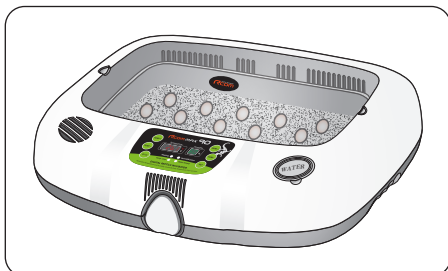
**BIRD**

**Rcom MAX 20 (MX-20)**

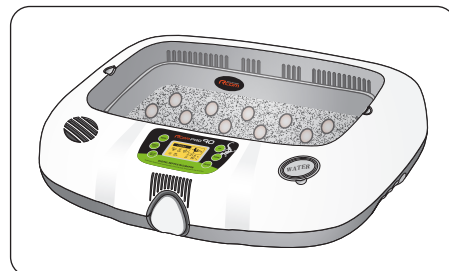


**BIRD**

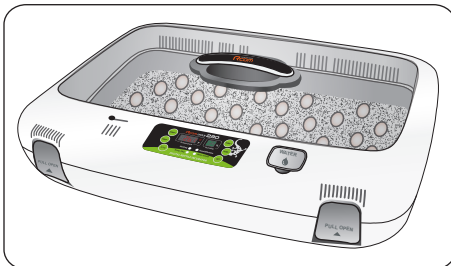
**Rcom PRO 50 (PX-50)**



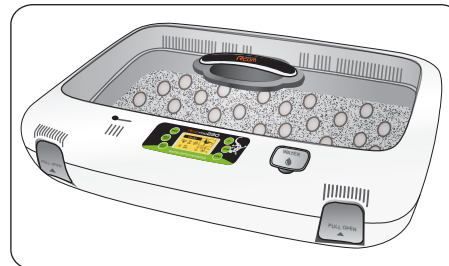
**Rcom REPTILE MAX 90 (MX-R90)**



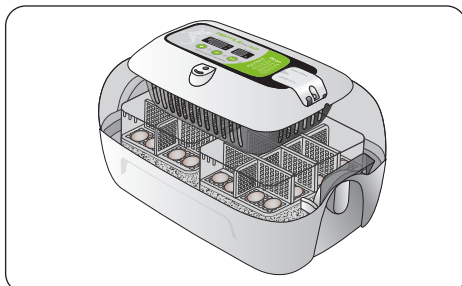
**Rcom REPTILE PRO 90 (PX-R90)**



**Rcom REPTILE MAX 230 (MX-R230)**



**Rcom REPTILE PRO 230 (PX-R230)**



**Rcom REPTILE MAX 60 (MX-R60)**



**Rcom DIGILOG  
(PX-V1)**



**Rcom DIGILOG2  
(PX-V2)**

It is possible to check additional information at Rcom homepage ([www.R-com.co.kr](http://www.R-com.co.kr)).

Rcom is designed for user's easy and convenient use.  
It can be changed without notice for improvement in performance,  
design,treatment, and software, etc.



[www.Rcom.co.kr](http://www.Rcom.co.kr)

## SELLER

## MANUFACTURER

### **AUTOELEX CO.,LTD.**

- Head Office : Deokam 612 Juchon Gimhae  
621-843 KOREA
- TEL : 82-55-337-2560 (Direct to sales team)  
82-55-337-2561~3 (Office)
- FAX : 82-55-337-2568
- E-MAIL : Rcom@Rcom.co.kr

Rcom is the Best Design with High Quality, Value, and Performance!